

# Our taskgroup

We have a dedicated **multi-jurisdictional** global taskforce closely tracking the progress of the Digital Services Act and Digital Markets Act including our technology regulation and policy, intellectual property, consumer and contracts, data protection and competition lawyers.

Please contact us if you would like more information about the DSA and DMA. **We are happy to help and work with you.**

## Intellectual Property Team



**Dr. Burkhard Goebel**  
Global Head of IPMT  
Partner, Madrid, Hamburg  
[burkhart.goebel@hoganlovells.com](mailto:burkhart.goebel@hoganlovells.com)



**Dr. Morten Petersenn**  
Partner, Hamburg  
IPMT  
[morten.petersenn@hoganlovells.com](mailto:morten.petersenn@hoganlovells.com)



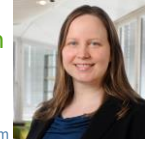
**Samantha C. Brinkhuis**  
Partner, Amsterdam  
IPMT  
[samantha.brinkhuis@hoganlovells.com](mailto:samantha.brinkhuis@hoganlovells.com)



**Celine Yimenez Crowson**  
Partner, Washington, D.C.  
IPMT  
[celine.crowson@hoganlovells.com](mailto:celine.crowson@hoganlovells.com)



**Anthonia Ghalamkarizadeh**  
Counsel, Hamburg  
IPMT  
[anthonia.ghalamkarizadeh@hoganlovells.com](mailto:anthonia.ghalamkarizadeh@hoganlovells.com)



**Sarah-Lena Kreutzmann**  
Counsel, Dusseldorf  
IPMT  
[sarah-lena.kreutzmann@hoganlovells.com](mailto:sarah-lena.kreutzmann@hoganlovells.com)



**Marlen Mittelstein**  
Counsel, Hamburg  
IPMT  
[marlen.mittelstein@hoganlovells.com](mailto:marlen.mittelstein@hoganlovells.com)



**Alastair Shaw**  
Counsel, London  
IPMT  
[alastair.shaw@hoganlovells.com](mailto:alastair.shaw@hoganlovells.com)



**Penelope Thornton**  
Counsel, London  
IPMT  
[penelope.thornton@hoganlovells.com](mailto:penelope.thornton@hoganlovells.com)



**Johannes Grossekettler**  
Senior Associate, Hamburg  
IPMT  
[johannes.grossekettler@hoganlovells.com](mailto:johannes.grossekettler@hoganlovells.com)



**Nico Kuhlmann**  
Associate, Hamburg  
IPMT  
[nico.kuhlmann@hoganlovells.com](mailto:nico.kuhlmann@hoganlovells.com)



**Giannina Leander**  
Associate, Amsterdam  
IPMT  
[giannina.leander@hoganlovells.com](mailto:giannina.leander@hoganlovells.com)



**Dr. Thilo Ortgies**  
Associate, Hamburg  
IPMT  
[thilo.ortgies@hoganlovells.com](mailto:thilo.ortgies@hoganlovells.com)



**Florian Richter**  
Associate, Hamburg  
IPMT  
[florian.richter@hoganlovells.com](mailto:florian.richter@hoganlovells.com)



**Jan Hendrik Schmidt**  
Associate, Hamburg  
IPMT  
[janhendrik.schmidt@hoganlovells.com](mailto:janhendrik.schmidt@hoganlovells.com)



**Katharina Schwalke**  
Associate, Hamburg  
IPMT  
[katharina.schwalke@hoganlovells.com](mailto:katharina.schwalke@hoganlovells.com)

## EU Competition Team in Brussels



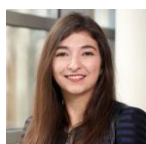
**Christopher Thomas**  
Office Managing Partner, Brussels  
Competition  
[christopher.thomas@hoganlovells.com](mailto:christopher.thomas@hoganlovells.com)



**Dr. Falk Schöning**  
Partner, Brussels, Berlin  
Competition  
[falk.schoening@hoganlovells.com](mailto:falk.schoening@hoganlovells.com)



**May Lyn Yuen**  
Counsel, Brussels  
Competition  
[maylyn.yuen@hoganlovells.com](mailto:maylyn.yuen@hoganlovells.com)



**Alexandra Bray**  
Associate, Brussels  
Competition  
[alexandra.bray@hoganlovells.com](mailto:alexandra.bray@hoganlovells.com)



**Myrto Tagara**  
Associate, Brussels  
Competition  
[myrto.tagara@hoganlovells.com](mailto:myrto.tagara@hoganlovells.com)

## Privacy and Cybersecurity Team



**Gonzalo F. Gállego**  
Partner, Madrid  
Privacy and Cybersecurity  
gonzalo.gallego@hoganlovells.com



**Dr. Christian Tinnefeld**  
Partner, Hamburg  
Privacy and Cybersecurity  
christian.tinnefeld@hoganlovells.com



**Eduardo Ustaran**  
Partner, London  
Privacy and Cybersecurity  
eduardo.ustaran@hoganlovells.com



**Dr. Henrik Hanssen**  
Senior Associate, Hamburg  
IPMT  
henrik.hanssen@hoganlovells.com



**Giulia Mariuz**  
Senior Associate, Milan  
Privacy and Cybersecurity  
giulia.mariuz@hoganlovells.com

## Commercial Team



**Marco Berliri**  
Partner, Rome  
Commercial  
marco.berliri@hoganlovells.com



**Richard Welfare**  
Partner, London  
Commercial  
richard.welfare@hoganlovells.com



**Christiane Alpers**  
Counsel, Hamburg  
Commercial  
christiane.alpers@hoganlovells.com



**Alberto Bellan**  
Counsel, Milan  
Commercial  
alberto.bellan@hoganlovells.com



**Paola La Gumina**  
Counsel, Rome  
Commercial  
paola.lagumina@hoganlovells.com



**Golo Edel**  
Senior Associate, Dusseldorf  
Commercial  
Golo.edel@hoganlovells.com



**Helen McGowan**  
Senior Associate, London  
Commercial  
helen.mcgowan@hoganlovells.com



**Michele Traversa**  
Associate, Milan  
Commercial  
michele.traversa@hoganlovells.com

## Litigation/Regulatory Team



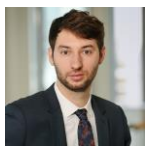
**Christelle Coslin**  
Partner, Paris  
Litigation  
christelle.coslin@hoganlovells.com



**Christine Gateau**  
Partner, Paris  
Litigation  
christine.gateau@hoganlovells.com



**Pauline Faron**  
Senior Associate, Paris  
Litigation  
pauline.faron@hoganlovells.com



**Victor Fabre**  
Associate, Paris  
Litigation  
victor.fabre@hoganlovells.com

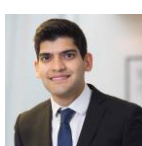


**Margot Mimoun**  
Associate, Paris  
Litigation  
margot.mimoun@hoganlovells.com

## Public Law Team



**Charles Brasted**  
Partner, London  
Public Law  
charles.brasted@hoganlovells.com



**Telha Arshad**  
Associate, London  
Public Law  
telha.arshad@hoganlovells.com

## Communications, Internet and Media



**Mark W. Brennan**  
Partner, Washington, D.C.  
Communications, Internet & Media  
mark.brennan@hoganlovells.com

Stay ahead of the latest developments. Join **Engage**.

Engage is our online subscription service available exclusively for our clients, that brings together our **latest legal, market and regulatory news, industry insights and analysis** from across our global network.